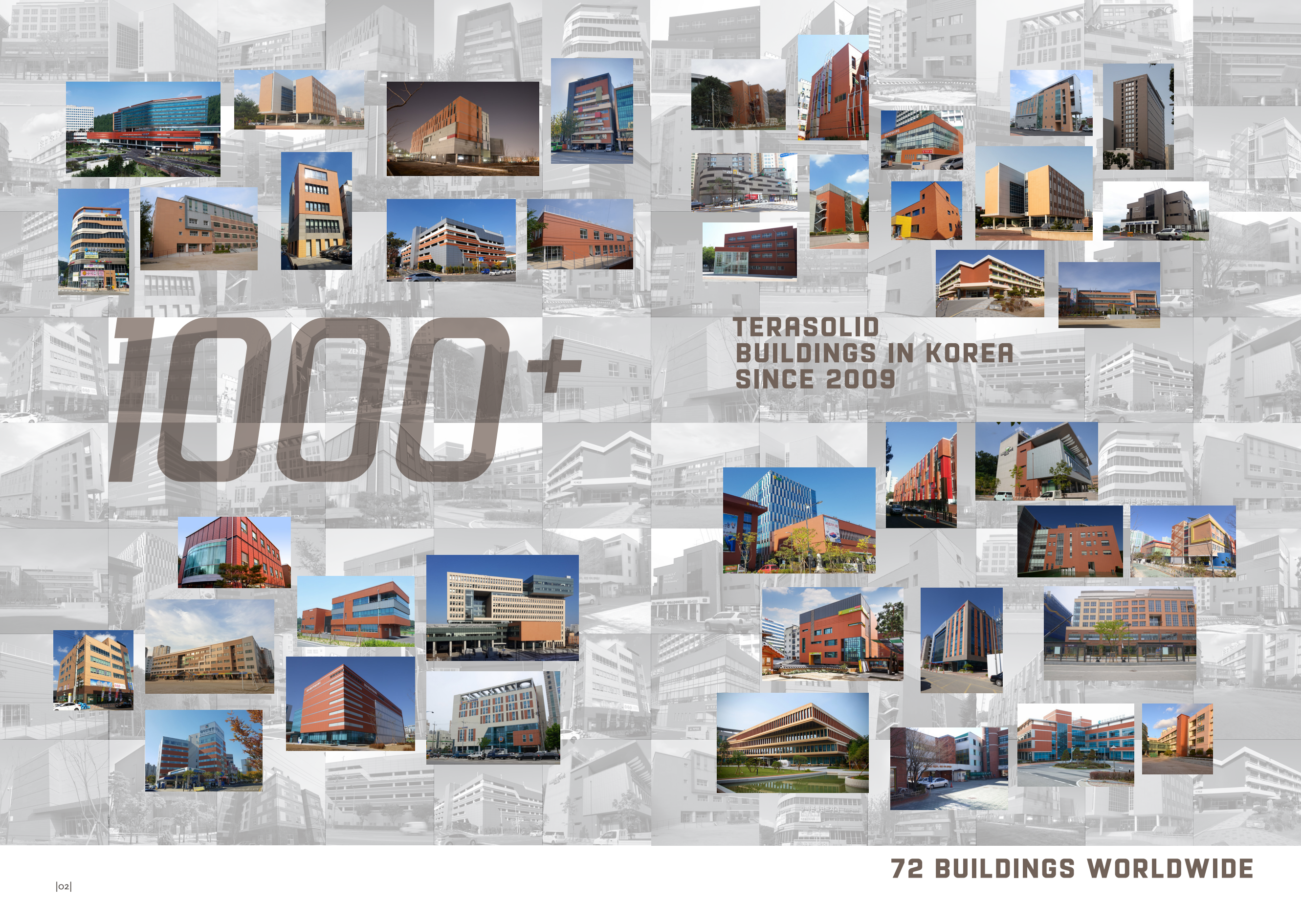


**TERA SOLID**

테라코타 패널



1000+

TERASOLID  
BUILDINGS IN KOREA  
SINCE 2009









72 BUILDINGS WORLDWIDE



Photo by Jonathan Smith on Unsplash

# COLORS

## Natural

- LIGHT SANDY 202   LIGHT GRAY 205
- SANDY 203   GRAY 208
- CAPPUCCINO 303   DARK GRAY 209
- LIGHT RED 302   CHOCOLATE 309
- BURGUNDY 305   SPAIN RED 308

## Glazed

색상 주문제작 가능  
CUSTOM COLORS AVAILABLE

- NAVY 503   CHARCOAL 505  
GLOSSY GLOSSY/MATT
- MUSTARD 508   SNOW WHITE 502  
GLOSSY MATT

# PRODUCTS

BASIC SIZE  
H 200/300/400/500  
L 600 ~ 1500  
T 16/20/24



**STAINLESS STEEL INSTALLATION**  
스텐레스 철물 시공법

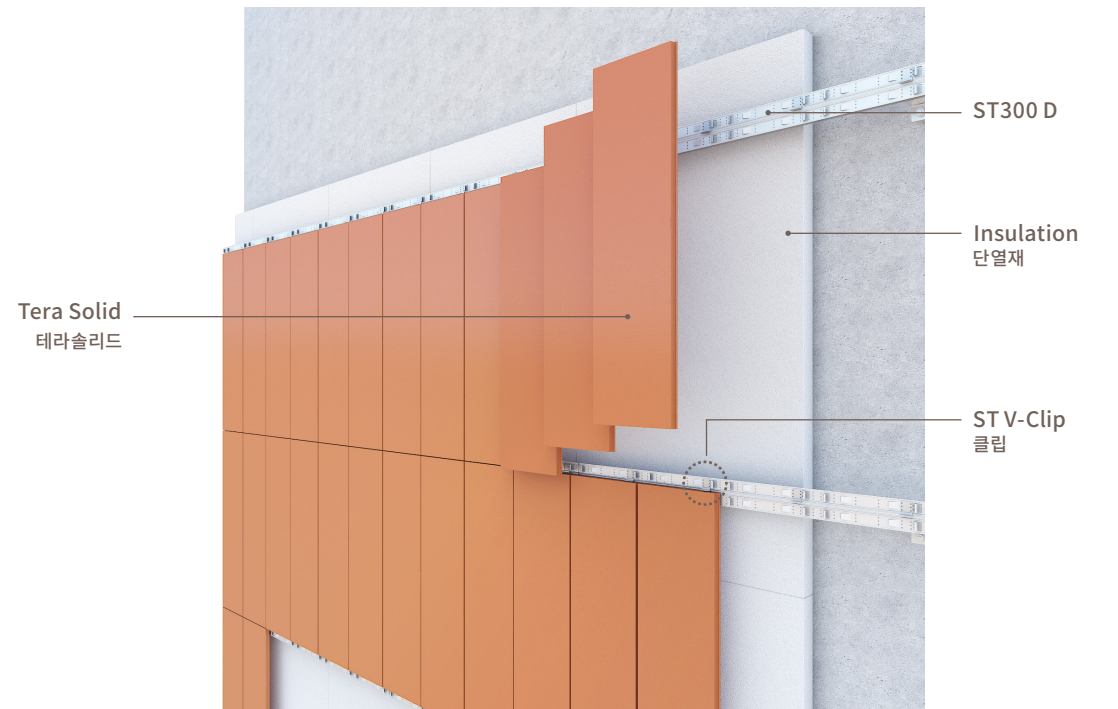


GENERAL ST SYSTEM

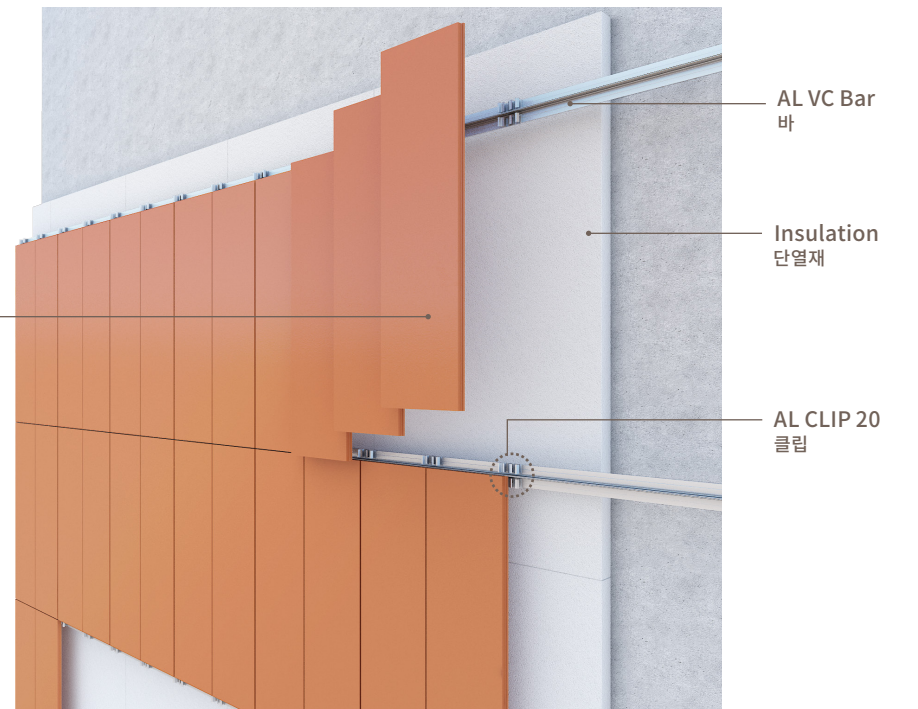
**ALUMINUM INSTALLATION**  
알루미늄 철물 시공법



GENERAL T-BAR SYSTEM



VERTICAL ST SYSTEM



VERTICAL T-BAR SYSTEM

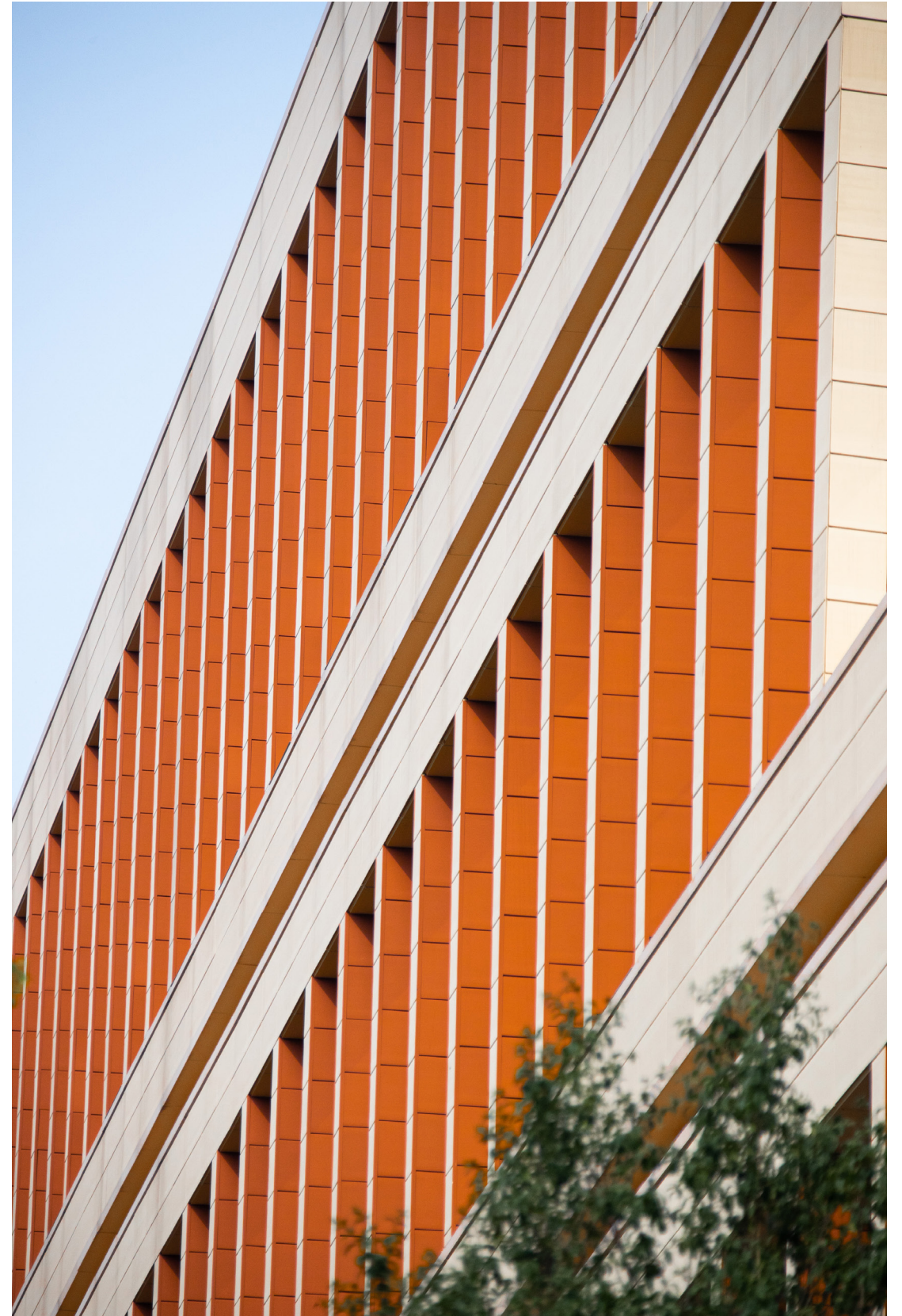
본 시공법은 특허받은 ㉠유도만의 시공법입니다.

본 시공법은 특허받은 ㉠유도만의 시공법입니다.





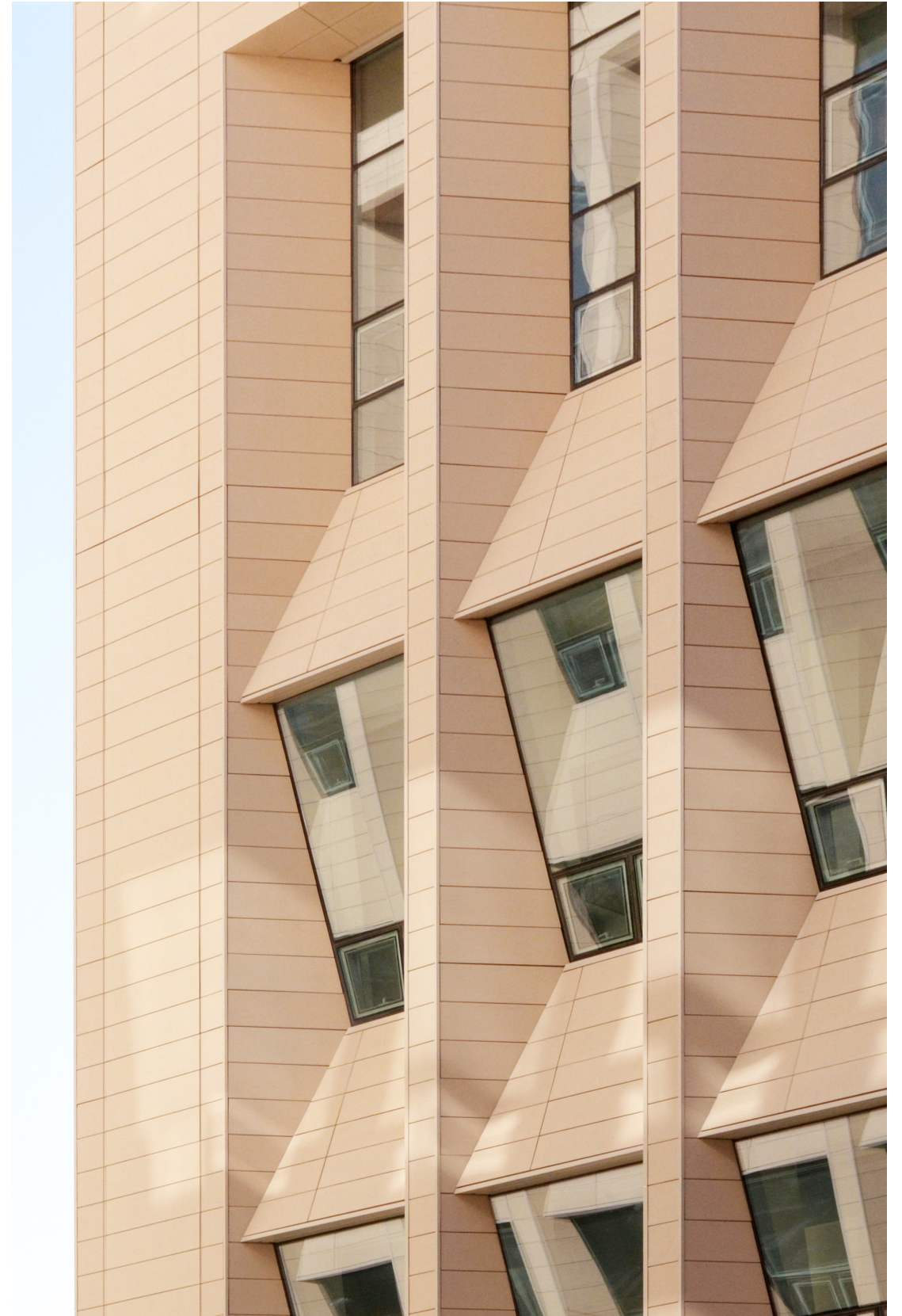
GOSEONG DEL PINO SONO FELICE  
고성 델피노 소노펠리체



THE NATIONAL AUDIO VISUAL INFORMATION SERVICE  
세종시한국정책방송원청사



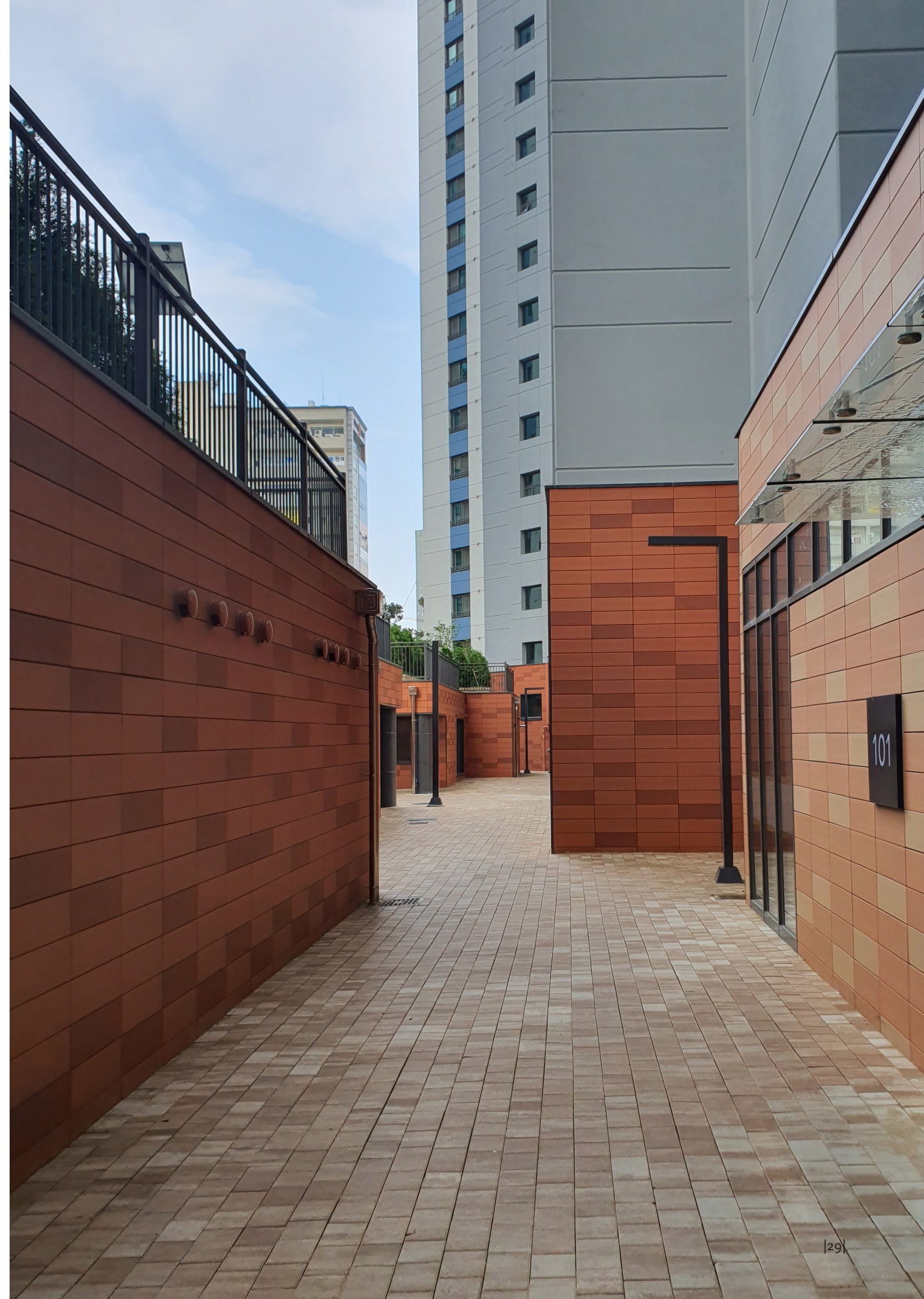














구조성능시험 및 층간 변위시험

[ 풍압 시험 ]

구조성능시험 (내 풍압) : Serviceability Test, ASTM E 330, Standard Test Method for Structural Performance of Exterior Windows, Doors, Skylight and Curtain Walls by Uniform Static Air Pressure Difference

Structural Performance (Design Load) by Static Pressure (구조성능시험) : ASTM E 330 설계풍압력의 100%에 대하여 Positive Pressure 50%(+134 kg/m<sup>2</sup>), 100%(+268 kg/m<sup>2</sup>), Negative Pressure 50%(-134 kg/m<sup>2</sup>), 100%(-268 kg/m<sup>2</sup>)의 압력을 각각 10초간 가한 후 정압과 부압 50%, 100%에서 설치된 Transducer 로 변위량을 측정한다.

- +134 kg/m<sup>2</sup> ( 50% Positive Design Load)
- +268 kg/m<sup>2</sup> (100% Positive Design Load)
- 134 kg/m<sup>2</sup> ( 50% Negative Design Load)
- 268 kg/m<sup>2</sup> (100% Negative Design Load)

본 결과는 만족스러우며 테스트에서 시행한 설계 풍압력 kgf/m<sup>2</sup>를 Pa단위로 환산 하면 다음과 같다.

- +134 kgf/m<sup>2</sup> = +1,314.1 Pa 정압 50%
- +268 kgf/m<sup>2</sup> = +2,628.3 Pa 정압 100%
- 134 kgf/m<sup>2</sup> = -1,314.1 Pa 부압 50%
- 268 kgf/m<sup>2</sup> = -2,628.3 Pa 부압 100%

결과적으로 본 Serviceability Test는 커튼월 및 테라패널(300x1,200x16T)을 동시에 Mock-up Test 를 시행 하여 얻은 결과 값으로 정압 +2,628.3 Pa, 부압 -2,628.3 Pa의 구조성능(내풍압)이 확보되었다고 할 수 있다.

[ 내진 성능 ]

구조성능시험(내 풍압)과 층간 변위 시험(내진 성능) CNC Mock-up Test Report 참고

층간 변위 시험(내진 성능) AAMA 501.4 Standard Test Method for Evaluating Performance Of Curtain Walls Due to Displacements Associated with Seismic Movements and Building Sway

Interstory Lateral Movement Test (층간변위시험-좌/우) : Aama 501.4  
At three(3) complete lateral movements being returned to the zero position after one cycle. as ±11.5 mm for 10 seconds for every maximum movement of structure.

Allowable : No Yielding, No Breakage, No Tearing, No Disengagement 본 결과는 만족스럽다.

변위 최대값을 적용 Left 11.93mm + Right 12.19mm 로 정리 하면

층간 변위 (내진성능)	AAMA 501.4	Serviceability Test	24.12mm = 24.00mm 이상
		Safety Test	36.18mm = 36.00mm 이상
1st	Cycle	Left 11.55mm	Right 11.93mm
2nd	Cycle	Left 11.68mm	Right 12.19mm
3rd	Cycle	Left 11.93mm	Right 12.06mm

으로 테라패널(300x1,200x16T)의 내진 성능을 확인 하였다.



CHARACTERISTICS 특성		STANDARD ISO 13006	TERA PANEL	REFERENCE		
1. Sample Production	1	Sampling and basis for acceptance 샘플링의 기본적 수용	Not applicable 해당없음	ISO 10545-1		
2. Dimensions & surface quality 치수와 표면	2.1	Surface quality 표면 품질	95% 이상	ISO 10545-2		
	2.2	Length and width 가로와 세로 수치	±2.0% 이내	ISO 10545-2		
	2.3	Thickness 두께 공차	±10% 이내	ISO 10545-2		
3. Physical properties 물리적 특성	3.1	Water absorption 흡수율	3.0%<E≤6.0%	4.40%	ISO 10545-3	
	4.1	Breaking strength 파괴 강도	breaking strength 휨파괴 저항	950N 이상	1809N	ISO 10545-4
			modulus of rupture 파열 계수	20N/mm <sup>3</sup> 이상 [개별 18N/mm <sup>3</sup> 이상]	33.8N/mm <sup>3</sup>	ISO 10545-4
	5.1	Impact resistance 충격저항	Report test result	0.79	ISO 10545-5	
	6.1	Abrasion resistance 내 마모성	unglazed 무유	393mm <sup>3</sup> 이내	147mm <sup>3</sup>	ISO 10545-6
			glazed 시유	Report test result	6 Mohs	ISO 10545-7
	8.1	Linear thermal expansion 선 팽창	Report test result	7.7 x 10 <sup>-6</sup> /°C	ISO 10545-8	
	9.1	Thermal shock resistance 열 충격 저항	Report test result	이상 없음	ISO 10545-9	
	10.1	Moisture expansion 수분 팽창	Report test result	0.192mm/m	ISO 10545-10	
	11.1	Crazing resistance 유약표면 저항	Report test result	해당 없음	ISO 10545-11	
12.1	Frost resistance 내 동해성	Report test result	이상 없음	ISO 10545-12		
16.1	Small colour differences 작은 색상 차이	Report test result	Conforms	ISO 10545-16		
4. Chemical properties 화학적 특성	13.1	Resistance to acid and alkalis 산 및 알칼리에 대한 저항	Report test result	내산성 내알칼리성 이상 없음	ISO 10545-13	
	14.1	Resistance to staining 내 오염성	unglazed	Report test result	class 4	ISO 10545-14
			glazed	min. class 3	해당 없음	ISO 10545-14
15.1	Lead and cadmium release 유해물질 검출여부	납, 카드뮴 검출여부	불검출	ISO 10545-15		
5. Mock-up Test Report	17.1	ASTM E 330 내 풍압 성능 Standard test method for structural performance of exterior windows, doors, skylights and curtain walls by uniform static air pressure difference	No Problem	300*1200*16 기준	※테스트리포트 별도제공 / Mock-up test report can be provided upon request	
	17.2	AAMA 501.4 내진 성능 Standard test method for water penetration of windows, curtain walls and doors using dynamic pressure	No Problem			

# TERRACOTTA BUILDINGS IN KOREA SINCE 2009

테라코타 패널 및 하드웨어 제조기업





TERRACOTTA  
UNITED  
MEMBERS

**EUTO INC**

EUTO DESIGN INC - KOREA / EUTO INTERNATIONAL INC - VIETNAM  
[www.eutoplus.com](http://www.eutoplus.com)

(주)유토